

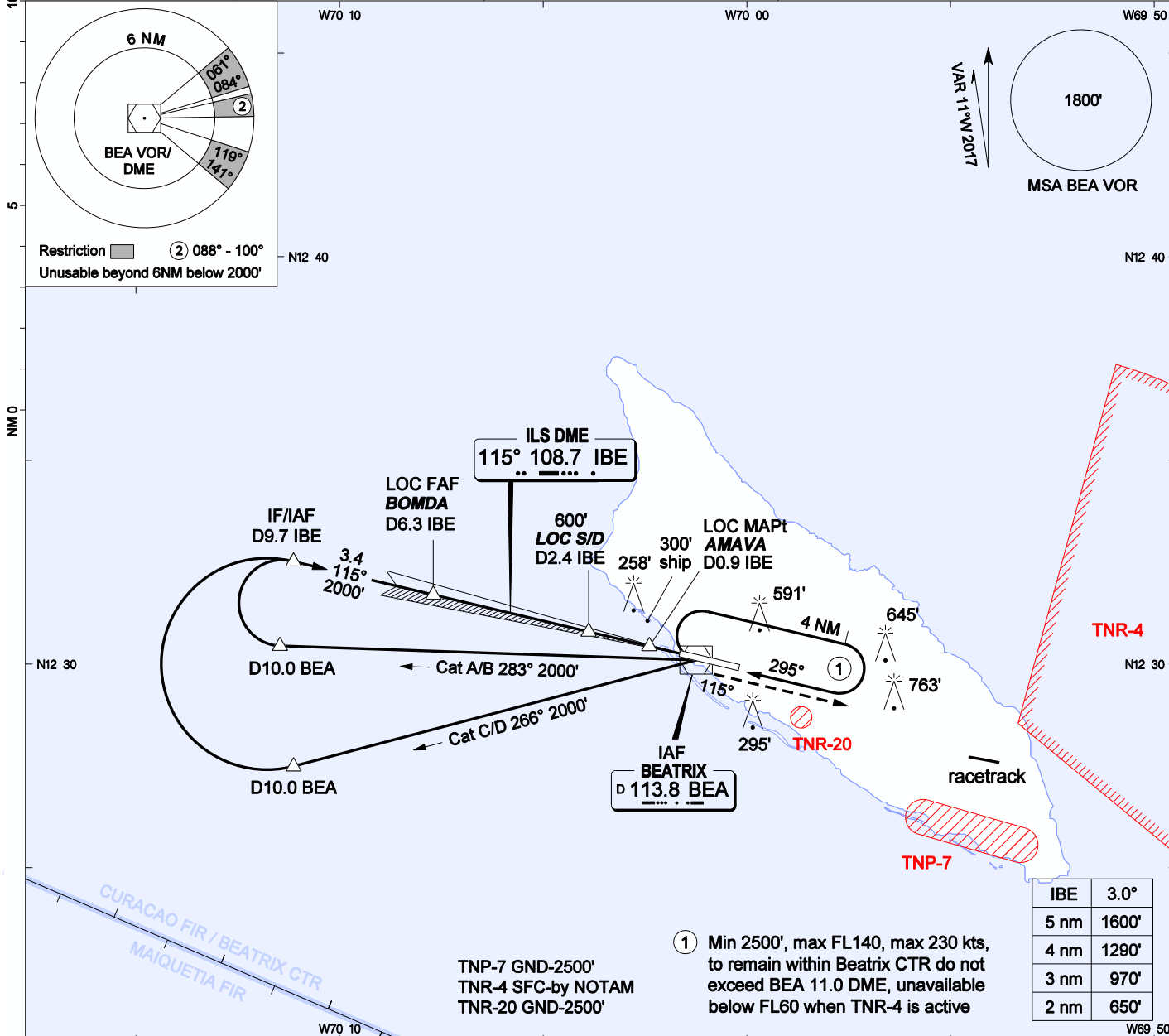
AIP DUTCH CARIBBEAN

**INSTRUMENT
APPROACH
CHART- ICAO**

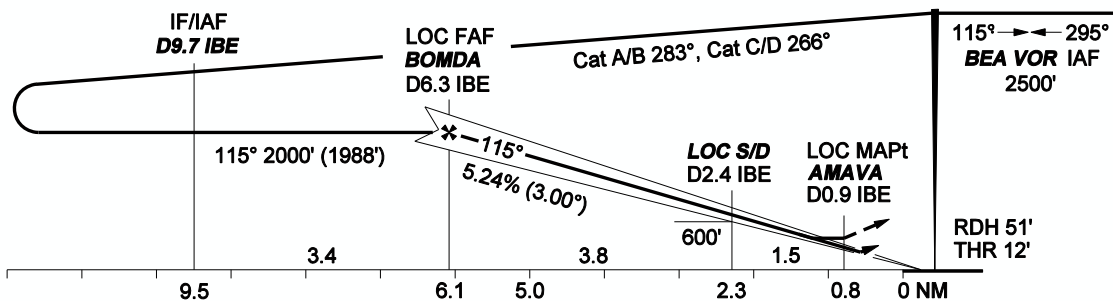
AD ELEVATION: 62'
TRANS LEVEL: FL 40
TRANS ALT: 2500' (2438')

BEATRIX:
APP/TWR 120.9 GND 118.0
APRON 121.6 ATIS 132.1

**ILS X RWY 11
REINA BEATRIX INT'L (TNCA)
ARUBA**



MISSED APPR: Climb on BEA R-115 to 1800', turn left, enter hold climbing to 2500', or as directed by ATC.



CHANGES: LOC S/D at D2.4 IBE coordinates.

OCA(H)	A	B	C	D	GROUNDSPEED - DESCENT RATE						
ILS CAT I	233' (221')	245' (233')	253' (241')	263' (251')	KNOTS	70	90	100	120	140	160
LOC (GS out)	440' (428')	440' (428')	440' (428')	440' (428')	FT/MIN	372	478	531	637	743	849
CIRCLING	890' (828')	890' (828')	1160' (1098')	1160' (1098')							

- Bearings are magnetic, altitudes, elevations and heights in feet and distance in NM. Straight-in heights are relative to THR elevation, other heights are relative to AD elevation.
- BEA DME may be used if IBE DME inoperative: add 0.3 nm.

THR11	N12 30	15.50	W070 01	38.98
GS/DME	N12 30	09.50	W070 01	30.25
AMAVA	N12 30	26.16	W070 02	23.69
BOMDA	N12 31	41.97	W070 07	41.98
IF/IAF D9.7 IBE	N12 32	30.88	W070 11	07.55
BEA R-283 D10.0	N12 30	26.66	W070 11	27.80
BEA R-266 D10.0	N12 27	29.65	W070 11	07.16
S/D D2.4 IBE	N12 30	47.47	W070 03	53.10